

**EXCAVATE & ELIMINATE
UTILITY STRIKES**



The T-VAC unit is a powerful, compact and versatile Vac-Ex unit. Capable of handling all types of ground (wet or dry) utilising optional on-board high pressure water and compressed air.

Vac-Ex Ltd reserves the right to change specification without prior notice.

www.vac-ex.com

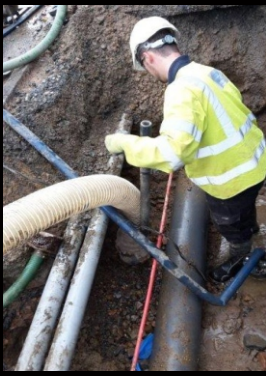


YouTube

JOHN MEE
VAC-EX
DESIGN MANUFACTURE

Vac-Ex Ltd, Derbyshire Court, West Moor Park
Doncaster DN3 3FD, UK

tel: +44 (0)1302 366900 mob: +44 (0)7931 544301
mob: +44 (0)7964 017188 email: info@vac-ex.co.uk
web: www.vac-ex.com



Accessories

Micro

Mini

Midi

Medium

Mega

TECHNICAL DATA : TRAILER MOUNTED

	S - Skip	XL - Skip
Length	2700 mm ** 4400 mm *	2700 mm ** 4400 mm *
Width	1725 mm 1800 mm *	1725 mm 1800 mm *
Height	2040 mm 2400 mm *	2040 mm 2400 mm *
Weight (tare)	2000 kg * **	2050 kg * **
Spoil Capacity	0.6m ³	1.0m ³
Hose inlet ø	150mm	150mm
Vacuum	Twin turbine	Twin turbine
HP Water (optional)	2,500 psi	2,500 psi
Compressed air (optional)	10 bar	10 bar
Electric power (optional)	6 Kva AC	6 Kva AC

** Dimensions mounted on 2.7t gross AD2000 trailer

** Weight not including compressor



Vac-Ex Ltd reserves the right to change specification without prior notice.

www.vac-ex.com



YouTube

JOHN MEE
VAC-EX
DESIGN MANUFACTURE

Vac-Ex Ltd, Derbyshire Court, West Moor Park
Doncaster DN3 3FD, UK

tel: +44 (0)1302 366900 mob: +44 (0)7931 544301

mob: +44 (0)7964 017188 email: info@vac-ex.co.uk

web: www.vac-ex.com